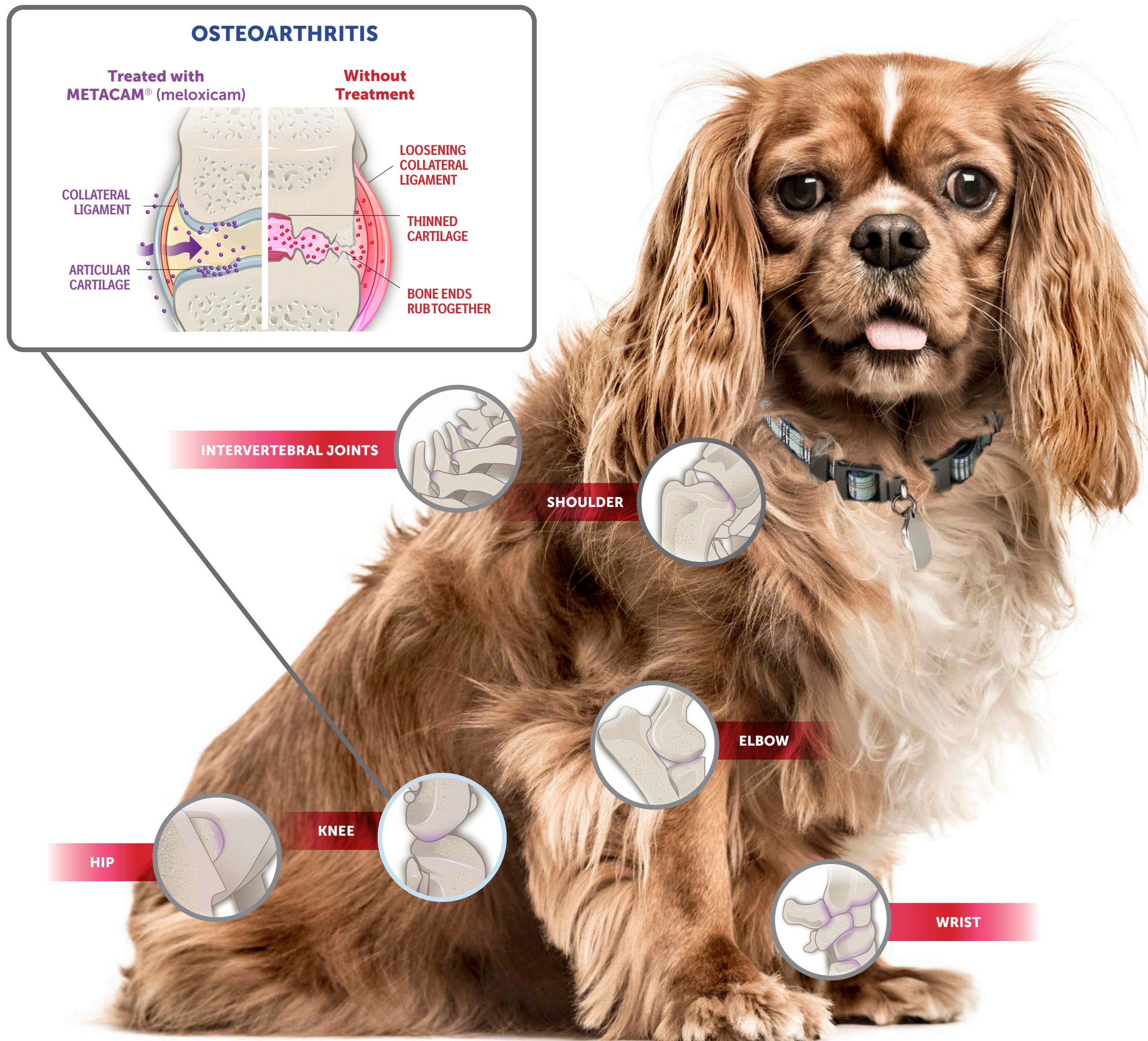
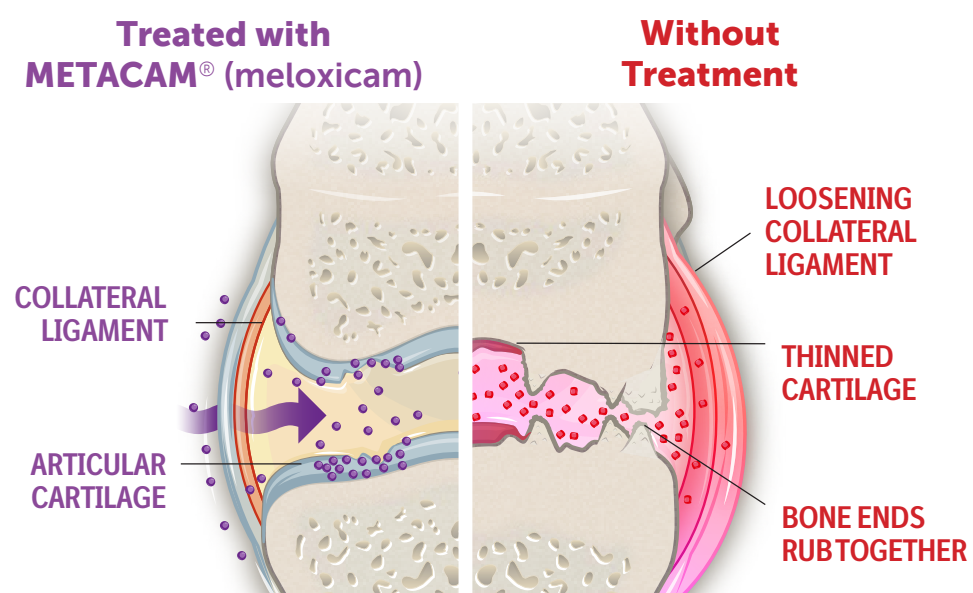


UNDERSTANDING OSTEOARTHRITIS PAIN

COMMON AREAS OF CANINE JOINT PAIN



OSTEOARTHRITIS



COMMON SIGNS OF CANINE JOINT PAIN



ACTIVITY LEVELS

- Lags behind on walks
- Restless at night
- Frequently licks a joint area and/or cries when it is touched



MOBILITY

- Struggles getting up from lying position
- Difficulty climbing/descending stairs
- Limp or alters gait



MOOD & APPETITE

- Lacks interest in favorite activities
- Change in regular eating pattern
- Prefers lying down and/or rests in unusual positions

Talk to your veterinarian if you notice any of these signs.



IMPORTANT SAFETY INFORMATION: METACAM® (meloxicam oral suspension) is for use in dogs only. METACAM (meloxicam) Solution for Injection is approved for use in dogs or cats (not indicated for osteoarthritis in cats). Repeated use of meloxicam in cats has been associated with acute renal failure and death. Do not administer additional injectable or oral meloxicam to cats. As a class, cyclooxygenase inhibitory NSAIDs like METACAM may be associated with gastrointestinal, kidney, or liver side effects. Dogs should be evaluated for pre-existing conditions and currently prescribed medications prior to treatment with METACAM, then monitored regularly while on therapy. Concurrent use with another NSAID, corticosteroid, or nephrotoxic medication should be avoided or monitored closely. For full product information, please see full prescribing information.



METACAM® is a registered trademark of Boehringer Ingelheim Vetmedica GmbH, used under license. ©2022 Boehringer Ingelheim Animal Health USA Inc., Duluth, GA. US-PET-0589-2022.

Metacam®
(meloxicam)
Injectable/Oral Suspension